

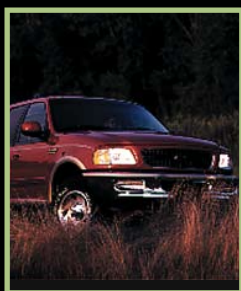
---

**Visctronic® Direct-Actuated Fan Drives**  
for Light Truck and SUV Applications

---

**V**iscous performance...electronic control. With Visctronic® direct-actuated fan drives from BorgWarner Thermal Systems, you get better cooling performance with greater fan control, less parasitic horsepower loss, and less noise. The Visctronic fan drive is controlled by the engine's electronic control module for precise fan speed modulation. Lower disengaged fan speed improves fuel economy and reduces over-cooling. The Visctronic fan drive's ability to better control engine temperature effectively provides the cooling needed for low tailpipe emission requirements. All of which make it an ideal choice for passenger car, sport utility vehicles (SUVs), and light trucks around the world.

*Visctronic fan drives combine proven viscous technology with precise electronic control for better engine cooling performance and efficiency.*



BorgWarner Thermal Systems is a single point of contact for cooling system components for passenger car, SUV, light truck, medium-duty truck, heavy-duty truck, and off-highway applications. We work with original-equipment manufacturers around the world to provide a full range of direct-actuated Visctronic® fan drives, viscous fan drives, Kysor™ on/off fan clutches, Cool Logic™ heavy-duty multi-speed drives, polymer fans, and shutters.

**cool**  
FAN DRIVES

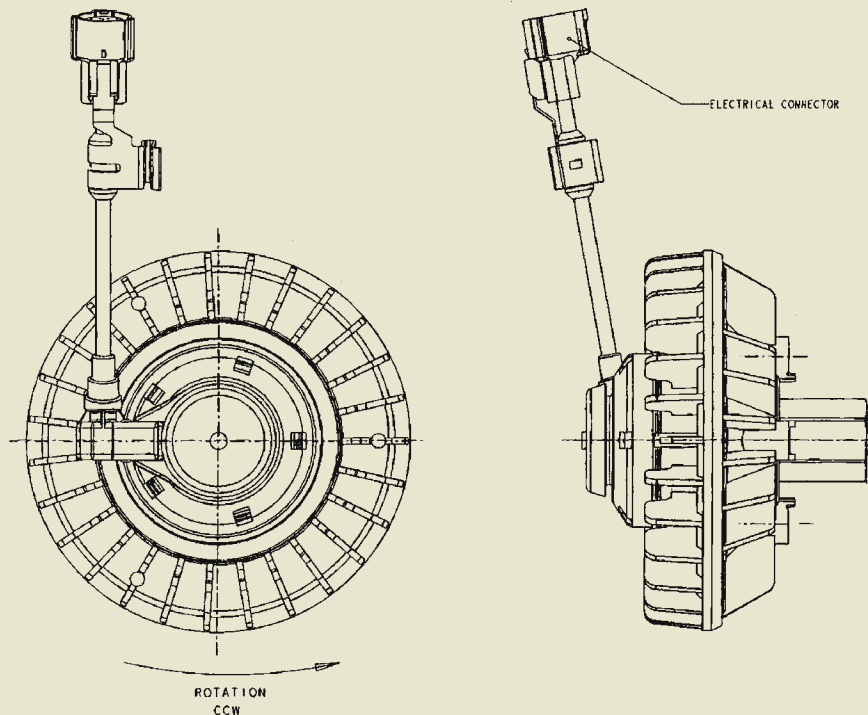
# Vistronic® Direct-Actuated Fan Drives

Intelligent Airflow Management for Better Cooling Performance.

## Features and Benefits

- Direct control by the engine's ECM—more precise fan speed modulation for greater cooling efficiency
- Less parasitic horsepower loss—frees more engine power for other tasks
- Improved fuel economy
- Lower average fan speed and horsepower during cooling—lower noise, greater economy, improved driver comfort
- No excessive fan cycling during engine idling with air conditioning—improved a/c head pressure control
- Precise air flow management—allows tighter control of engine temperature to assist reduction in tailpipe emissions
- Smoother speed transitions—reduces belt stress and extends belt life
- Fan speed feedback signal—enables ECM diagnostics and prognostics
- Maintenance-free design—long life, low-cost dependability

Model	Weight	Diameter	Fan Pad To Drive Front	Torque Capacity
MDS	6.06 lb 2.75 kg	7.35 in 186.7 mm	3.96 in 100.6 mm	266 in-lb 30 Nm
MDD	6.39 lb 2.90 kg	7.35 in 186.7 mm	3.53 in 89.7 mm	354 in-lb 40 Nm



### Worldwide Technology Centers

1507 South Kalamazoo Avenue  
Marshall, MI 49068 USA

Planckstrasse 4 + 6  
D-88677 Markdorf Germany

[www.bwthermal.com](http://www.bwthermal.com)



**BorgWarner**  
**Thermal Systems**